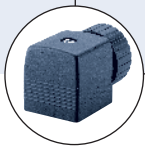




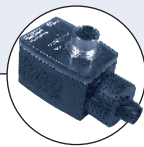
Type 0142 can be combined with...



Type 2508
Cable plug



Type 1078
Timer unit

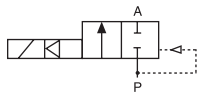


Type 2511/12
ASI cable plug

Servo-assisted solenoid valve with diaphragm, normally closed function. Hermetic isolation of fluid from the actuator. A minimum differential pressure of 7 PSI is required to fully open the valve.

Valves can be mounted or removed radially for a space-saving installation.

Circuit function A



2/2- way valve, normally closed, with 3-way pilot servo-assistance

2/2-way Solenoid Valve for aggressive media, true union, Ø20-63

- Isolating diaphragm between the solenoid and fluid
- Non-metallic valve internals
- Pivoted armature, with lockable manual override
- Simple installation and removal

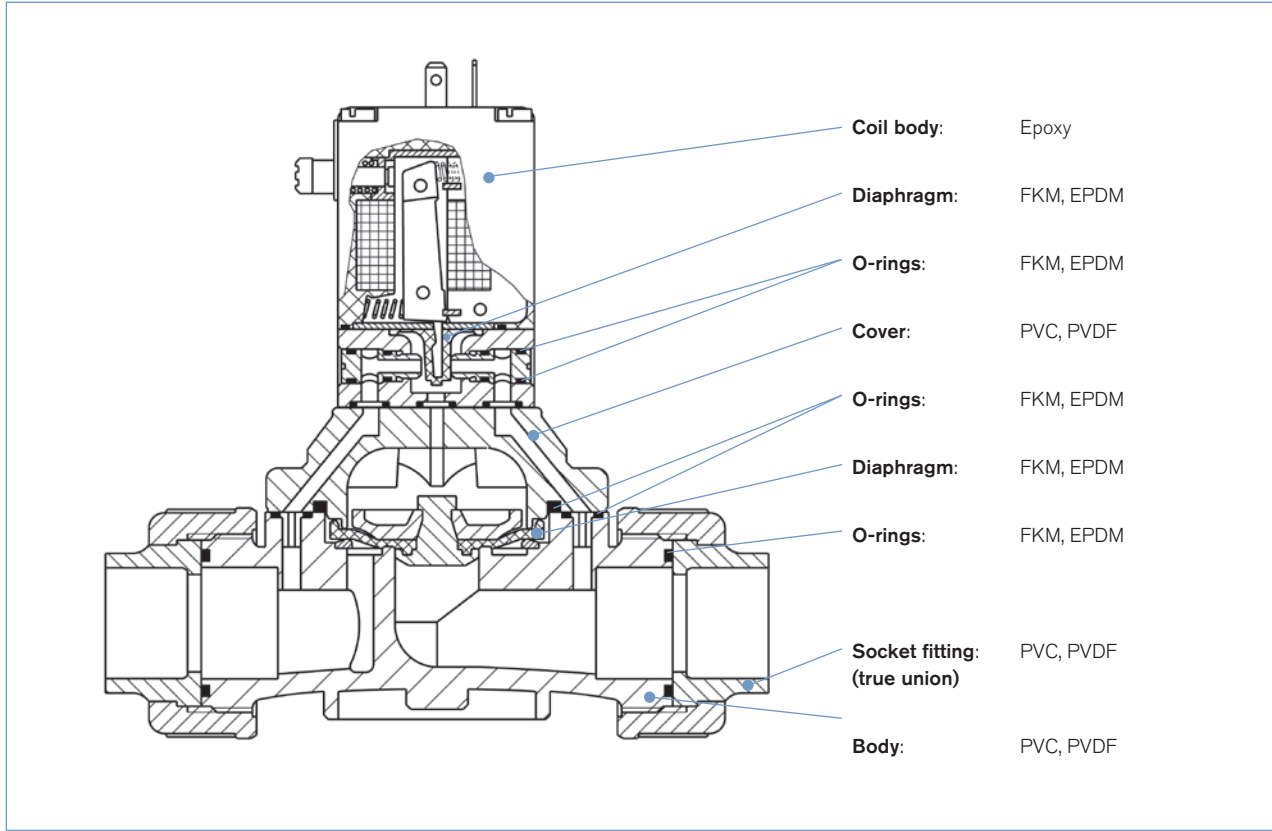
Technical data	
Orifice	DN 15 - 50
Body material	PVC, PVDF (on request)
Inner part valve	PVDF
Seal material	FKM, EPDM
Media with EPDM with FKM	Alkalis, alkaline washing and bleaching lyes Oxydizing acids and substances, salt solutions
Media temperature PVC-body PVDF-body	32°F to 122°F (0°C to +50°C) 32°F to 158°F (0°C to +70°C)
Ambient temperature PVC-body PVDF-body	32°F to 104°F (0°C to +40°C) 32°F to 131°F (0°C to +55°C)
Voltage tolerance	±10%
Duty cycle	100% continuous rating
Electrical connection	Cable plug for Ø 7 mm acc. to DIN EN 175301-803 Form A (supplied as standard)
Protection class	IP 65 with cable plug
Coil insulation class	Class H
Port connection	True union
Installation	as required, preferably with actuator upright

Power consumption			
Inrush		Hold (hot coil)	
AC [VA]	DC [W]	AC [VA/W]	DC [W]
20	5	11/5	5

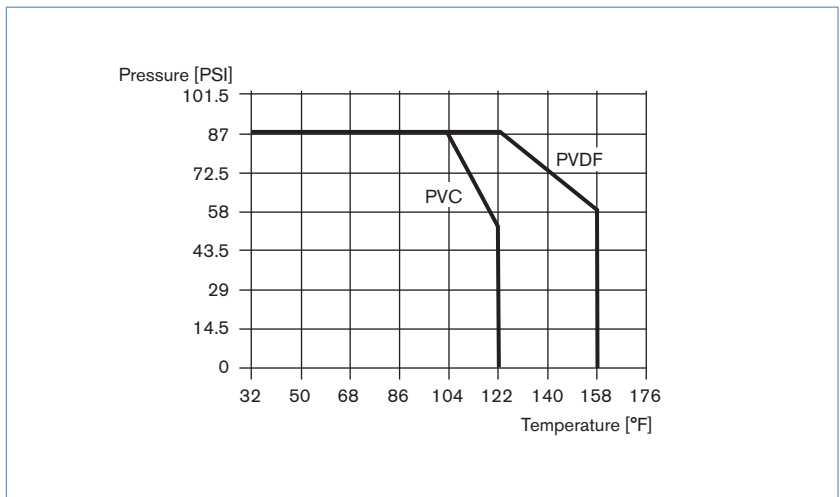
Response times ¹⁾	
Opening [ms]	100 - 800
Closing [ms]	1000 - 4000

¹⁾ Measured at valve outlet at 87 PSI and 68°F (+20°C) acc. to ISO 12238.
Opening: Pressure rise 0 to 90%, Closing: Pressure drop 100 to 10%

Materials



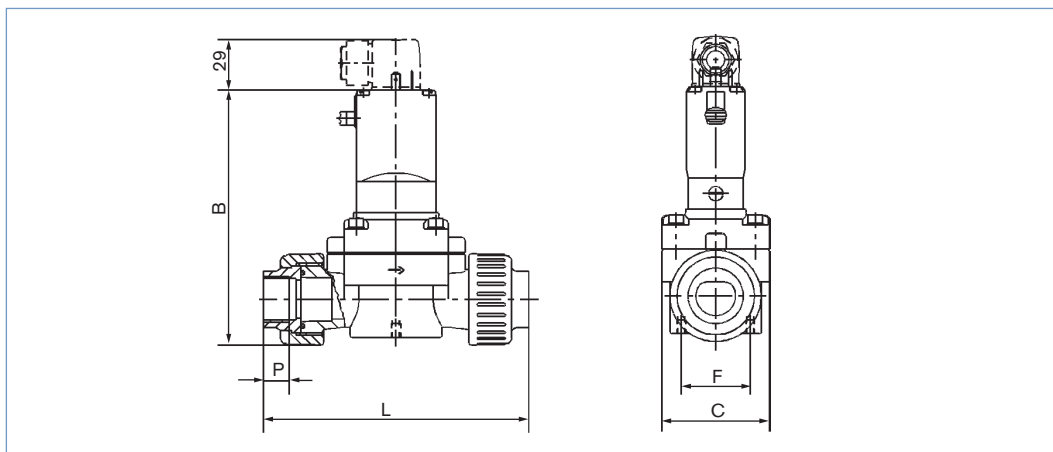
Pressure-Temperature-chart for PVC and PVDF



Ordering chart

Circuit	Pressure Range [PSI]	Body Material	Seal Material	Port Connection	Orifice Value Size [inch]	C _v [gpm]	Voltage/Frequency	Item no.
A	7-87	PVC	EPDM	1/2"	9/16"	5.8	24/DC	453 994
							24/60	454 302
							120/60	453 349
							240/60	457 214
				3/4"	3/4"	7.0	24/DC	453 988
							24/60	453 987
							120/60	453 350
							240/60	US01215
				1"	1"	16.3	24/DC	454 004
							24/60	US00569
							120/60	453 351
							240/60	456 283
				1 1/4"	1 1/4"	18.6	24/DC	US06217
							120/60	454 102
							240/60	US00283
				1 1/2"	1 1/2"	35.0	24/DC	US00165
							24/60	US01068
							120/60	453 352
							240/60	US01055
				2"	2"	41.9	24/DC	US01634
							24/60	US00574
							120/60	453 353
							240/60	US01454
				FKM	1/2"	9/16"	5.8	24/DC
			120/60					454 146
			240/60					US06525
			24/DC					US02219
			3/4"		3/4"	7.0	120/60	453 964
							24/DC	455 566
							120/60	455 024
							24/DC	US05647
			1"		1"	16.3	120/60	454 247
							24/DC	US05260
							120/60	454 232
							120/60	454 705
			1 1/4"	1 1/4"	18.6	24/DC	454 909	
						120/60	457 922	
						24/DC	088 655	
						120/60	US01997	
			1 1/2"	1 1/2"	35.0	120/60	123 844	
						120/60	US05588	
						120/60	US05590	
						120/60	US05590	
			FKM	20mm	9/16"	5.8	24/DC	088 662
							24/60	US06442
							120/60	US05589
							24/DC	088 661
				25mm	3/4"	7.0	24/60	150 496
120/60	126 550							
24/DC	089 941							
120/60	US04203							
31mm	1"	16.3		24/DC	089 946			
				24/DC	089 946			
				120/60	138 766			
				120/60	126 549			
40mm	1 1/4"	18.6	120/60	126 549				
			120/60	126 549				
			120/60	126 549				
			120/60	126 549				
50mm	1 1/2"	35.0	120/60	126 549				
			120/60	126 549				
			120/60	126 549				
			120/60	126 549				
63mm	2"	41.9	120/60	126 549				
			120/60	126 549				
			120/60	126 549				
			120/60	126 549				
PVDF		EPDM	20mm	9/16"	5.8	24/60	454 909	
						120/60	457 922	
						24/DC	088 655	
						120/60	US01997	
			25mm	3/4"	7.0	24/DC	088 655	
						120/60	US01997	
						120/60	123 844	
						120/60	US05588	
			31mm	1"	16.3	120/60	US05590	
						120/60	US05590	
						120/60	US05590	
						120/60	US05590	
		FKM	20mm	9/16"	5.8	24/DC	088 662	
						24/60	US06442	
						120/60	US05589	
						24/DC	088 661	
			25mm	3/4"	7.0	24/60	150 496	
						120/60	126 550	
						24/DC	089 941	
						120/60	US04203	
			31mm	1"	16.3	24/DC	089 946	
						24/DC	089 946	
						120/60	138 766	
						120/60	126 549	
40mm	1 1/4"	18.6	120/60	126 549				
			120/60	126 549				
			120/60	126 549				
			120/60	126 549				
50mm	1 1/2"	35.0	120/60	126 549				
			120/60	126 549				
			120/60	126 549				
			120/60	126 549				
63mm	2"	41.9	120/60	126 549				
			120/60	126 549				
			120/60	126 549				
			120/60	126 549				
B	7-87	PVC	EPDM	1/2"	9/16"	5.8	24/60	US05208
							24/DC	US01961
							120/60	US00134
							24/DC	US02490
				3/4"	3/4"	7.0	120/60	US03687
							120/60	US03687
							120/60	US07088
							240/60	US01600
				1"	1"	16.3	120/60	US00147
							120/60	US00147
							120/60	US01648
							120/60	US01648
FKM	3/4"	3/4"	7.0	120/60	US06523			
				120/60	US06523			
				120/60	US01483			
				120/60	US01483			
	1"	1"	16.3	120/60	US05718			
				120/60	US05718			
				120/60	US05344			
				120/60	US05344			
1 1/4"	1 1/4"	18.6	120/60	453 594				
			120/60	453 594				
			120/60	453 594				
			120/60	453 594				

Dimensions [mm]



All versions					PVC-body		PVDF-body	
DN	Pipe Ø	B	C	F	L	P	L	P
15	20	148	62.5	40	148	16	147	16
20	25	148	62.5	40	154	19	151	18
25	32	174.5	85	44.5	190	22	185	20
32	40	174.5	85	44.5	198	26	189	22
40	50	212	115	44.5	254	31	245	25
50	63	212	115	44.5	268	38	253	29