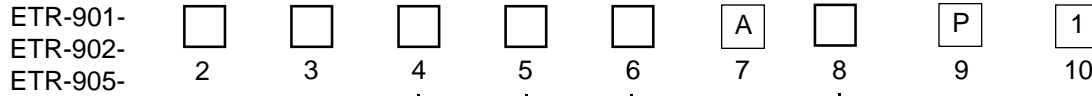


**ORDERING INFORMATION FOR 1/16 DIN ETR® TEMPERATURE CONTROLS\***



- Input Voltage**
- 1 100/120VAC, 50/60Hz
  - 2 220/240VAC, 50/60Hz
  - 3 20-30VAC/VDC

- Control Mode**
- 1 ON/OFF
  - 2 Proportional

- Cycle Time**
- 1 Not applicable (ON/OFF, output for SCR)
  - 2 20 seconds for relay
  - 3 1 second for SSR
  - 4 Other

- Temperature Range**
- |                                   |                    |
|-----------------------------------|--------------------|
| <b>ETR-901/ETR-902</b>            | <b>ETR-905</b>     |
| <b>FB</b> 0-400°F (ETR-901 only)  | <b>FA</b> 0-200°F  |
| <b>FC</b> 50-850°F                | <b>FB</b> 0-300°F  |
| <b>FF</b> 0-1100°F (ETR-902 only) | <b>FD</b> 0-999°F  |
| <b>FI</b> 0-2200°F                | <b>FF</b> 0-1200°F |
| <b>CF</b> 0-400°C                 | <b>FG</b> 0-1600°F |
| 50-850°F (Dual Scale)             | <b>FH</b> 0-2000°F |
| <b>CA</b> 0-400°C (ETR-902 only)  | <b>FL</b> 0-399°F  |
| <b>CE</b> 0-600°C (ETR-901 only)  | <b>FN</b> 0-599°F  |
|                                   | <b>CB</b> 0-600°C  |
|                                   | <b>CN</b> 0-999°C  |
|                                   | <b>CL</b> 0-1200°C |

- Output**
- 01 3 AMP relay
  - 02 Pulsed voltage to drive SSR
  - 04 4-20mA

- Sensor Type/Input**
- 01 K
  - 02 J
  - 04 RTD PT100 (DIN)
  - 05 RTD PT100 (JIS)

**EXAMPLE:** ETR-902-1 FC 02 01 2 A 2 P 1  
 ETR-905-1 FD 02 01 2 A 2 P 1

*Blocks 6 and 8 must be in agreement*

*\*Not all selections are adaptable from stock items—See Stock List*