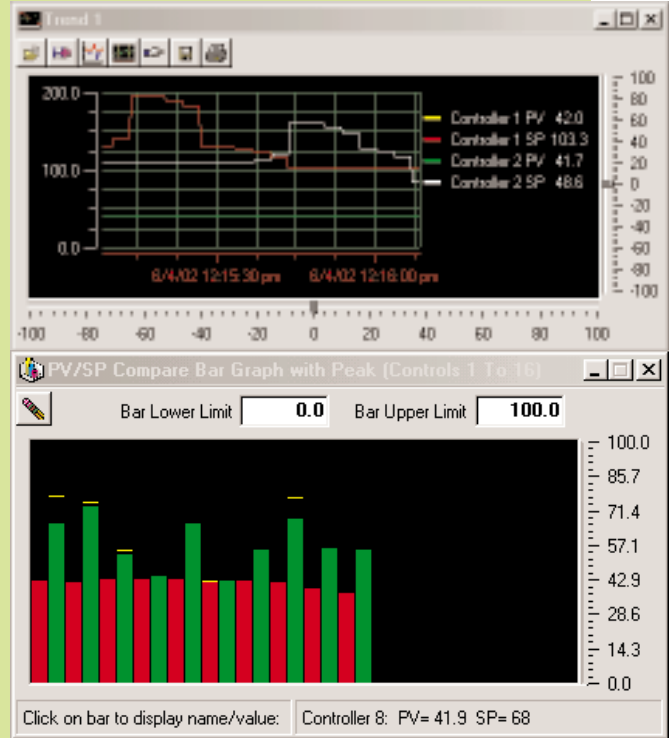


Future Design's MultiView is a complete configuration and data acquisition package for Future Design controllers.

Configurable data save, real time trends, alarm logging, digital values, bargraphs and more! Up to 64 units can be connected. Complete project setups can be saved or loaded to eliminate time consuming setup tasks during product or system changes.

The built-in data viewer allows the user to view any data file in a spreadsheet format without leaving the program. Plotting historical data is as easy as selecting cells and pressing the "plot" button.

Multiview supports FDC models 2500, 9300, 8300 and 4300 series. Wing8, XP and 2000 supported.



MULTIVIEW FEATURES

CONTROLLER FACEPLATES

Up to 64 controller faceplates. Setpoint access for each controller.

REAL TIME TRENDS

8 real time trends. Up to 12 points can be configured for each trend. Trend setups can be saved to disk to reduce setup time during product runs.

DATA LOGGING

Number of points to log and user defined interval for logging adjustable by user.

BARGRAPHS

Bargraphs for up to 64 controls. Bargraphs are "auto config" when controller is activated in system. Bargraph limits adjustable by user.

CONTROL CONFIGURATOR

User has complete control over parameter configuration. Configurations can be saved to disk for later retrieval to reduce setup time.

PROFILING

16 segment profiler included in software (PC generated).

DIGITAL VALUES

Digital values window monitors process value and setpoint for all controllers activated in system.

ALARM LOGGING

System alarms are monitored by the alarm logger. Date, time, PV at alarm and operator acknowledge are supplied.

LOOP TUNING

Manual tune parameters, auto tune initiate and loop tune trending is included to reduce process setup time.

DATA VIEWER

Built in data viewer provides analysis of data files in a spreadsheet type format. "Auto Trend" of selected cells included.

FUTURE DESIGN MULTIVIEW

OVERVIEW/SCREENSHOTS



Controller Faceplates provide an operator view of alarm, PV and Setpoint.

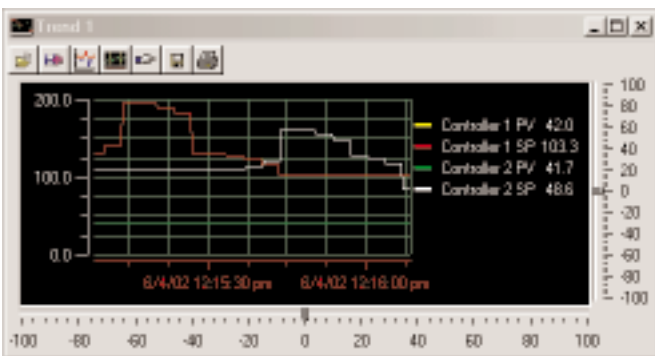


Loop Tuning setup provides the operator with manual and auto-tune capabilities.

Description	Proc Val	Setpoint
Controller 1	28.8	30
Controller 2	29.5	50
Controller 3	27.1	19.1
Controller 4	28.9	55
Controller 5	29.8	122
Controller 6	28.4	26.7
Controller 7	28.1	26.7

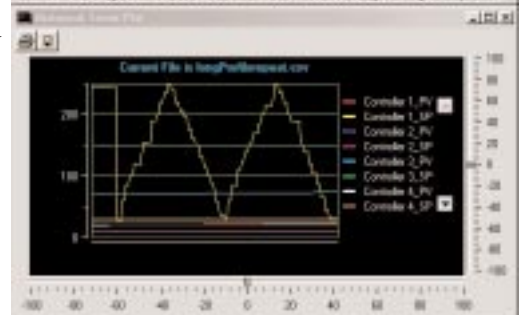
TagName	Time Of Alarm	PV At Alarm	Ack
Controller 1	11:14:55 AM	28.7	No
Controller 2	11:14:55 AM	29.3	No
Controller 3	11:15:04 AM	26.9	No

Digital values/alarm monitor supply all system data to the operator. Alarms can be printed or acknowledged on demand.



Up to 12 points per real time trend. All parameters are configurable including color, ticks, scale and date format. Trend setups can be saved to disk for later retrieval. Trends can be printed or saved as jpeg files.

Date	Controller 1 SP	Controller 2 PV	Controller 3 SP
3/5/02	23.8	20.8	26.7
3/5/02	23.5	20.4	26.7
3/5/02	23.9	20.8	26.7
3/5/02	23.5	20.5	26.7
3/5/02	23.5	20.8	26.7
3/5/02	23.5	20.1	26.7
3/5/02	23.9	20.8	26.7
3/5/02	23.5	20.1	26.7



Built in data viewer makes analysis of data a snap. Drag across cells and "auto-trend" with a click of the mouse. Data compression and expansion of data included in trend view.